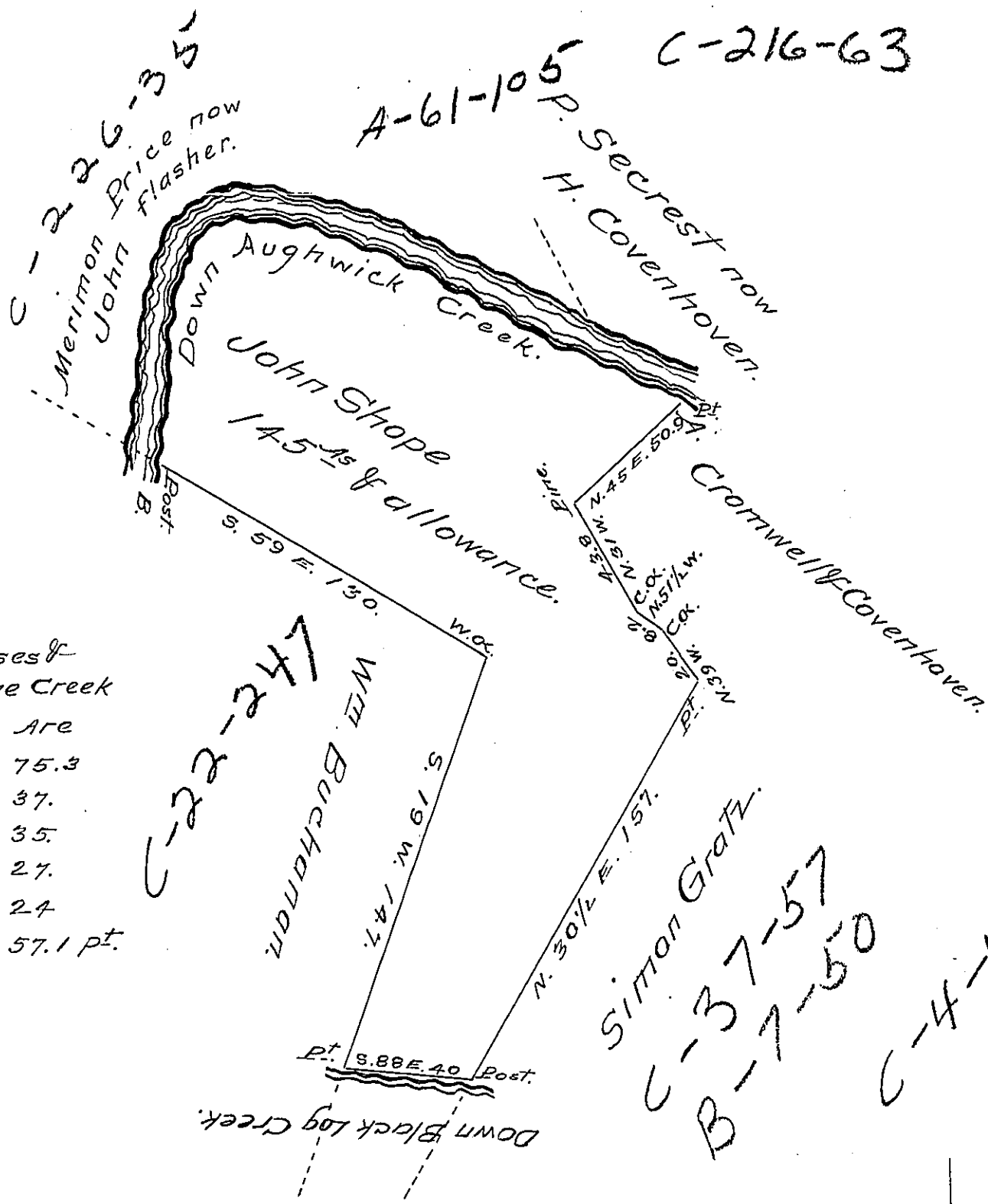


FORM NO. 1.



N. B. The Courses & Distances on the Creek from A. to B. Are

N.	64 1/2	W.	75.3
N.	67	W.	37.
S.	69 1/2	W.	35.
S.	85	W.	27.
S.	27	W.	24
S.	5	W.	57.1 pt.

at B. ↙

SITUATE in Shirley Township Huntingdon County
 Containing one hundred forty five Acres And the
 usual allowance of six per cent for Roads &c
 Surveyed the 5th day of Decr. 1834 In pursuance of a
 Warrant Granted to John Shope Dated the 19th
 day of November 1834.

Wm. Reed D.S.

To Jacob Spangler Esq. }
 Surveyor General. }

IN TESTIMONY that the above is a copy of the original remaining on file in the Department of Internal Affairs of Pennsylvania, made conformably to an Act of Assembly approved the 16th day of February 1833, I have hereunto set my hand and caused the Seal of said Department to be affixed at Harrisburg, this twentieth day of December 1907.

Henry Houder
 Secretary of Internal Affairs.